

A group of young people at a festival, smiling and taking a selfie with a smartphone. The scene is lit with warm, golden light, suggesting sunset or sunrise. The people are wearing festival wristbands and casual clothing. The background is slightly blurred, showing other festival-goers and structures.

Новинки компании Sony

IBC-2019

SONY

GO MAKE
TOMORROW



REACH MORE
AUDIENCES FIRST

НОВОСТНОЕ ПРОИЗВОДСТВО

Линейка плечевых камкордеров XDCAM XAVC



PXW-X320



XDCAM XAVC

- 3x 1/2" inch Type Exmor Full HD CMOS Sensors
- XDCAM Camcorder
- 16 x Zoom
- HD OEM Fujifilm AF zoom Lens
- Recording Full HD XAVC up to 100Mbps
- Wireless Option: CBK-WA101

PXW-X400
PXW-X400KF
PXW-X400KC



XDCAM XAVC

- 3x 2/3" inch CMOS Full HD Exmor Sensor
 - Advanced best balanced news Shoulder Solid State Camcorder
 - Wireless, LAN & NFC
 - XAVC & MPEG HD422
 - DVCAM & IMX
- KF= Fujifilm AF zoom lens kit + VF
KC= Canon Zoom lens kit +VF

PXW-Z450



XDCAM XAVC 4K

- Single UHD 2/3" type CMOS Exmor R Sensor
- Weight-Balanced Advanced UHD Shoulder Camcorder
- Variety of Network Functions
- Low Power Consumption
- QFHD output option PXWZ-Z450QL
- HDR support (HLG & Slog3)

PXW-X500



XDCAM XAVC

- 3x 2/3" inch Full HD CCD Power HAD FX
- Solid State High Frame Rate Shoulder Camcorder
- XAVC & MPEG HD422
- SStP / HDCAM-SR
- HFR up to 120fps option (PXWK-503)
- ProRes HD422 codec option (PXWK-501)
- DNxHD HD422 codec option (PXWK-502)

PXW-Z750



XDCAM XAVC 4K

- 3x 2/3-type 4K CMOS Sensor with Global Shutter.
- HD & 4k HDR
- Wireless workflow with XDCAM air and DWX.
- 120FPS at HD
- B4 Lens mount
- XAVC-L422 QFHD 200 codec
- XAVC-I QFHD Class 300 4K & MPEG HD422 codec

Audio Options :

- Shotgun microphones : ECM-673, ECM-674, ECM-678 mono , ECM-680S stereo
- Wireless audio : URX-S03D & DWR-S02DN slot-in receivers for UWP or DWX series + ECM-77BC mic

CBK-DL1 Dual link LTE adapter kit



Expand USB connectors on compatible camcorders:

- 1x > 2x USB ports: [PXW-X200*](#), [PXW-X400](#), [PXW-X500](#), [PXW-Z450](#)
- 2x > 3x USB ports: [PXW-Z190*](#), [PXW-Z280*](#) (V2.0) , [CBK-WA100/101](#)

Add new Network functions:

- Dual Link QoS Streaming to XDCAM air and connected PWS-1xxRX1 series (LTE+LTE or LTE+Wifi)
- Selected/Partial clips transfer to FTP using Content Browser Mobile app. or Xair (LTE+ Wifi dongle)
- HEVC(H.265) QoS streaming to Xair & connected PWS-110RX1A (not on PWS-100RX1 /PWS-110RX1)
Target bit rate : up to 12Mbps (HEVC on RX1A)
- Intercom and Dual Link QoS Streaming to XDCAM air for PXW-Z280/Z190 Version V2.00 (Dec 2018)**



Dual Stream & Intercom is supported by all RX1 series (V1.9.0) associated with XDCAM air V2.5 (Dec 18)

* PXW-X200, Z190/Z280 requires a mounting bracket for CBK-DL1 (bracket being designed by Protech)

** Intercom: PXW-Z190/Z280 have built-in WiFi , requires an optional HID USB headset + CBK-DL1 for Dual LTE

Видоискатели для плечевых и студийных камер

HDVF-L10



- Affordable QHD LCD Viewfinder
- HDVF 20pin round analog I/F
- Dual Flip Mechanism (as CBK-VF02)
- Dual mode display: Centre scan with on screen tallies (Amber, Green, Red)
- Warning ! LED

HDVF-EL20



- Full HD 0.7" OLED viewfinder
- Best in class, No competitor
- HDVF 20pin round analog I/F
- High Dynamic Range 200Cd/m2
- Rain resistant
- High Eyepoint (easy focus)
- Warning ! LED

HDVF-EL30



- Full HD 0.7 OLED Viewfinder
- 3.5" LCD monitor
- Best is class, No competitor
- HDVF 20pin round analog I/F
- High Dynamic Range 200Cd/m2
- Rain resistant
- High Eyepoint (easy focus)
- LCD Tally or Monitor flipflop
- Warning ! LED

A film crew is working on a rocky set. Several crew members are visible, some wearing white hats and light-colored clothing. They are surrounded by professional camera equipment, including a large camera on a tripod and a camera on a dolly. The background consists of large, light-colored rocks. The text "EMOTION IN EVERY FRAME" is overlaid in large, white, outlined letters across the center of the image.

EMOTION IN
EVERY FRAME

КИНОПРОИЗВОДСТВО

Digital Motion Picture Camera

VENICE



- 6K Full Frame (36x24mm) Sensor
- 500ISO & 2500ISO Sensitivity & 15+ Stops DR
- 8 step optical ND Filter System
- PL & E-Mount(Level Lock Type)
- New Colour Management System
 - Improved Roll Off, Skintone reproduction
- Independent LUT Management (Version Up)
- 16bit RAW/X-OCN Support with AXS-R7
- DVF-EL200 Full HD OLED viewfinder
- 4:3 & 6:5 Anamorphic Support
- 2 Displays → Full control from Assistant Side
- Newly build with isolated electronic circuit to survive toughest productions
- XAVC 4k/QFHD, MPEGHD & Apple ProRes HD on SxS card
- HFR 4K 2.39:1 max 120 fps 6K 3:2 max 60 fps
- Cooke/i3 and Zeiss Extended metadata in X-OCN/RAW
- Licenses (Weekly/ Monthly/ Permanent) for:
 - Anamorphic
 - Full Frame
 - High Frame Rate

VENICE обновление ПО

Version 4.0 firmware

Released June 2019

Imager mode

- 4K 2.39:1 for HFR

Recording Formats

- HFR shooting in Select FPS Shooting Functions
- 4K 2.39:1 Max. 120FPS
- 4K 17:9 Max. 110FPS
- 4K 4:3 Max. 72FPS
- 6K 3:2 Max. 60FPS

Shooting function

- RM/RCP control (Incl. paint)
- Cooke/i3 and Zeiss Extended metadata in X-OCN/RAW

Monitor Out function

- Pure P HD-SDI output in 25p/29p

Shooting Assist function

- LINE+MASK Frame Line

Hardware

- S700 Protocol

Version 5.0 firmware

Upgrade available in January 2020

HFR Capabilities

- 6K 2.39:1 Max 90FPS
- 6K 17:9 Max. 72FPS
- 6K 1.85:1 Max. 72FPS

HD ProRes 4444

- Up to 30FPS on SxS Pro+ cards

Monitor Out function

- Flip & Flop via SDI & VF
- High resolution Magnification via Monitor Out

Shooting Assist Function

- Improved User Marker Settings

Камеры серии FS

PXW-FS5M2
PXW-FS5M2K
PXW-FS5



4K **XAVC** **MPEG HD422**

- 4K Super 35mm Exmor CMOS Sensor
- XDCAM Camera with Powered Zoom Lens
- Instant HDR
- α Mount Lens System
- RAW, HFR and MPEG2 option (RAW&HFR included in FS5M2/FS5M2K)
- XAVC L Recording
- Electronic variable ND filter
- Audio connection: UWP-D Series via MI Shoe / 2x XLR
- Up to 240 fps in Full HD / 960 upconverted

PXW-FS7M2
PXW-FS7M2K



4K **XAVC** **MPEG HD422**

- 4K Super 35mm Exmor CMOS Sensor
- XDCAM Camera with Powered Zoom Lens
- *XDCA-FS7 (option) for 12-bit RAW, internal ProRes 422 Recording and 240 fps RAW in Full HD*
- Audio connection: UWP-D Series via MI Shoe / 2x XLR
- 4 audio channels
- Electronic variable ND filter
- Lever lock-type E-Mount Lens System
- Improved ergonomics
- BT.2020 color space recording
- 10 assignable buttons
- FS7M2K: XDCAM Camera with APS-C/S35 Powered Zoom Lens (SELP18110G)

PXW-FX9 ***NEW***



4K **XAVC** **MPEG HD422**

- 6K Full Frame Exmor R CMOS Sensor
- 15+ stop Latitude
- Dual ISO : 800 and 4000
- Fast Hybrid Auto Focus
- Cinematic Look (S-cinetone and s709LUT)
- 4 audio channel
- Electronic variable ND filter
- Lever lock-type E-Mount Lens System
- 12G-SDI, Timecode-in, Genlock, 1x MI shoe
- FX9K: XDCAM Camera with FullFrame Powered Zoom Lens (SELP28135G)

Product	CBK-FS7BK *NEW*
Customer Value Proposition	Turn the FS7 into a traditional shoulder design
Target market	Broadcasters, News, Corporate and Education
Competitor Models	No real competitor model but offers much better usability as all 3 rd party single items



Key Features	Benefits
3 in One Set	Proper Viewfinder & Wireless Unit & Shoulder Adapter
Wireless Unit	Offers direct Wireless Workflow Support incl XDCAM air and Slot in for Wireless Audio. QoS streaming with Dual link connection improves image quality and stability.
Viewfinder	Follows same design and usability as traditional shoulder camcorder viewfinder for easy use
Shoulder Plate	Features a new sliding mechanism with a wide adjustment range, ensuring the optimum weight balance.
B4 Lens Mount Adaptor	Adding the optional LA-EB1 mount adaptor allows for the attachment of B4 lenses to the FS7 enabling shooting at high zoom ratios with a deep depth of field.

The FS7 Build Up kit offers best usability for customers who wants to use a Large Format sensor camera in ENG & CNG application but prefer to us a more traditional shoulder type design.

Due to the direct attachment the amount of cables are reduced and the whole unit becomes more comfortable on the shoulder

Product	LA-EB1 B4 adapter *NEW*
Customer Value Proposition	Use of B4 lenses with FS7 series maximising use of lens assets
Target market	Broadcasters, News, Corporate and Education
Competitor Models	MTF and iBE adapters



Key Features	Benefits
Easy to use	Direct connection to FS7 series without tool
Image Quality	Only 0.6 F-Stop drop which means less than 1 stop brightness decrease
ALAC Support	Support of ALAC via FW Update to avoid chromatic aberration
IRIS & ZOOM control	Support of all conventional features of B4 lenses
Use of conventional B4 lenses	Support of long zoom lenses and if shallow DoF is not needed

Product	XDCA-FX9 *NEW*
Customer Value Proposition	Extension Unit of FX9
Target market	Documentary and Broadcasters
Competitor Models	None



Key Features	Benefits
Uncompressed 16bit RAW	FS7 and FS5 gave compressed 12bit RAW output but FX9 is upgraded to 16bit RAW. It`s expanding the expression for creators as they would like.
V shoe mount battery expansion	Longer shooting is possible
Dual Link Support/Wired LAN	More stable networking connection support for XDCAM Air.
D-Tap/Hirose Power supply	Possible to supply power from extension unit to 3 rd party accy.
Slot-in Audio function	Offers 2 channel wireless audio capability

Product	SELC1635G *NEW*
Customer Value Proposition	16mm-35mm T3.1 Cinema Lens
Target market	Creators, Broadcasters and any Professional Videographers



Unique Selling Points	Customer Benefits, what does this mean for the customer
Unleashing the expression capability of both Full-frame and S35 camcorders	This is Full Frame E-mount and E-mount is designed for both APS-C(Super35) and Full Frame. And, our product from consumer to pro (cinema) is using same mount.
Excellent resolution and bokeh effects thanks to consistent T3.1 (F2.8) large aperture	Lens structure is same as very famous and popular G master series 16-35mm. You can see reputation in media that G master resolution and bokeh are amazing for both photography and videography.
Linear Response MF makes accurate manual Focas	Linear Response MF enables smooth, lag-free manual focus, allowing you to adjust focus accurately and intuitively. The focus ring offers a 120deg large angle of rotation for finer control, with distance scale makers for consistent focus reset during multiple takes.
Detachable servo zoom	Servo function is removable. Depends on usage and camera set up, customer can choose if it`s put or not
Wi-Fi control capability	Zoom, Iris and Focas are possible to control via Wi-Fi.



THE ART OF LIVE

СТУДИЙНОЕ ПРОИЗВОДСТВО

Системные камеры 4K/UHD - описание

HDC-4800



- 4K/UHD/HD HFR Portable System Camera
- S35mm PL Mount (2/3" – B4-Mount Adaptor)
- S35 CMOS (1x)
- Frame Rates:
 - 3840 x 2160 (1x)
 - 3840 x 2160 (4x)+(8x)
 - 1920 x 1080 (1x)+(4x)
 - 1920 x 1080 (8x)+/16x)
- BPU-4800 + HDCU
- SMPTE Fibre

HDC-4300



- 4K/UHD/HD Portable System Camera
- 2/3" – B4-Mount
- 2/3" CMOS (3x)
- Frame Rates:
 - 4096 x 2160 (1x/2x)
 - 3840 x 2160 (1x/2x)
 - 1920 x 1080 (1x/3x)
 - 1920 x 1080 (4x/6x/8x)
- HDCU-4300 or BPU-4500A/-4000 + HDCU
- SMPTE Fibre

HDC-P43



- 4K/UHD/HD PoV Camera
- 2/3" – B4-Mount
- 2/3" CMOS (3x)
- Frame Rates:
 - 4096 x 2160 (1x/2x)
 - 3840 x 2160 (1x/2x)
 - 1920 x 1080 (1x/3x)
 - 1920 x 1080 (4x/6x/8x)
- HDCU-4300 or BPU-4500A/-4000 + HDCU
- Single Mode Fibre + HKCU-SM100

HDC-P50



- 4K/UHD/HD PoV Camera
- 2/3" – B4-Mount
- 2/3" CMOS (3x) with Global Shutter
- Enhanced WCG Prism for BT2020 support
- Frame Rates:
 - 1080i / 720P
 - 2160P
 - 1080PsF
 - 1080P
- 12G output (2x) or 4x 3G-SDI out for 4K/UHD images directly from camera head
- No need for external HDCU or BPU
- Remote control via 700-Command Protocol (Sony RCP/MSU)
- HD HFR capable up to x6

Figures in RED show optional functions

Системные камеры 4K/UHD - описание

HDC-5500 & HDCU-5500 ***NEW***



- 4K/HD-HFR Portable System Camera
- New Signal Processing inside the camera head with UHD output.
- UHB (Ultra High Band) transmission between HDC-5500 and HDCU-5500
- UHB fiber transmission allows 4K (12G) TRUNK and 4K(12G) PROMPTER Line
- New 2/3" 3-CMOS 4K Image Sensors with Global Shutter
- High sensitivity F10, Low S/N ratio -62dB, Wide Dynamic Range 1300%
- New Wide Color Gamut Prism block to support BT.2020
- 1080P and 1080i as standard frame rates (no need HZC-PRV50)
- 12G-SDI for 4K output is available as standard feature
- **Optional High Frame Rate support** (up to 2x speed in 4K and up to 8x speed in HD)
- eLink for camera numbering

HDC-3500 & HDCU-3500 ***NEW***



- Compact and lightweight 19" 3U Half size CCU for HDC-3xxx series
- companion CCU for HDC-3500/3100
- Compatibility to HDC-2xxx-series and HDC-1700.
- 12G-SDI and 4K output available as option (License: **HZCU-UHD35**)
- IP ST2110 interface is available as option (**HKCU-SFP50**).
- **HKCU-SM50** as 3G Single Mode Fiber transmission option between HDC-3500/2500 w/HDCE-100.
- WEB MENU

Figures in **RED** show optional functions

Системные камеры 4K/UHD - описание

HDC-3500 & HDCU-3100



- 4K/HD Portable Systems Camera with native 4K imagers for superb picture quality
- HDR (S-LOG3 & HLG) and enhanced BT2020 support
- 2/3" – B4-Mount
- 2/3" CMOS Sensors with Global Shutter (3x)
- Exchangeable side covers (Fiber, Triax, Wireless)
- Frame Rates:
 - 1080i, 720P
 - 1080P, 1080PsF
 - 1080-RGB, 1080 Dual Speed (100i)
 - 3840 x 2160
- SMPTE Fibre transmission to CCU
- HDLA-15xx support
- eLink for camera numbering

HDC-3100 & HDCU-3100



- HD Portable Systems Camera with native HD imagers for superb picture quality
- HDR (S-LOG3 & HLG) und BT2020 support
- 2/3" – B4-Mount
- 2/3" CMOS Sensors with Global Shutter (3x)
- HDC-3100 with Fiber-transmission / **HDC-3170** with digital triax transmission
- Frame Rates:
 - 1080P, 1080i, 720P
 - 1080PsF (only for HDC-3100)
- HDCU-3100 with Fiber / HDCU-3170 with digital triax transmission
- HDCU-3170 can host additional fiber modul to allow triax AND fiber reception
- 4K upscale output from HDCU-3100/-3170 with HKCU-UHD30

HDC-3170 & HDCU-3170



Figures in RED show optional functions

Системные камеры 4K/UHD - описание

HKC-WL50

HDC-5500 /-3500 WIRELESS Camera ***NEW***



- HKC-WL50 (Wireless Side Panel for HDC-3500/-5500) allows RF-equipment manufacturers to integrate their wireless transmission technology into this side cover allowing to change the camera transmission technology to a wireless system
- VisLink (UK based manufacturer) and WAVE CENTRAL (US based) already developed 4K wireless technology and integrated into HKC-WL50
- UHD and HD Frame rates (up to 4x speed) are possible to be transmitted via wireless link.
- V-Mount battery adaptor is included (standard accessory).
- The integrated wireless technology for HDC-3500/-5500 cameras will exclusively being available from the wireless manufacturers. Please address your sales request to VisLink (UK) or Wave Central (US). HKC-WL50 will only be sold to these manufacturers and are not available to the public market.
- In order to transmit 4K signals from HDC-3500/-5500 camera head, the SW license HZC-UHD50 is required.
- In order to transmit HFR signals from HDC-3500/-5500 camera head, the SW license HZC-HFR50 is required

Поворотные камеры серии BRC

Edge Analytics ***NEW***

An advanced built-in AI-based video technology that analyses input it receives from connected cameras (PTZ & Handy Cams).

The result of this analysis is applied in combination with camera feeds and other image sources to create high-quality video content that can be displayed live or recorded.

Acting as the smart hub of a connected AV setup, the compact and light-weight REA-C1000 allows broadcasting customers to automatically generate compelling video content in real time without the expense and complexity of dedicated production teams and specialized additional equipment.



Поворотные камеры



BRC-H900

- 1/2" HD 3CMOS
- 14x opt Zoom
- 1080/50i
- 1x HD/SD-SDI
- 1 free slot
- IP control option
- S700PTP option
- BRU-SF10 as CCU to be used up to 2km fibre cable length)



BRC-H800W/BRC-H800

- Sensor as BRC-X1000
- 12x Opt Zoom
- HD/50p/25p
- 2x 3G/HD-SDI
- 1x HDMI
- Trace Memory
- PTZ sync motion
- PoE+
- IP control
- S700PTP support
- 100 Preset Memories
- 1/4, 1/16, 1/64 ND
- Same chassis than BRC-X1000



***NEW* BRC-X400**

- *detail spec TBC
- 1/2.5 ExmorR CMOS
- 30x (4K with CIZ)/40x (HD with CIZ), (Digital 12x)
- UHD/25p or HD/50p/25p
- 3G-SDI/HDMI (4K output only via HDMI)
- NDI@|HX
- PoE+
- IP control
- S700PTP support



BRC-X1000W/BRC-X1000

- 1" 4K ExmorR CMOS
- 12x Opt zoom
- UHD/25p or HD/50p/25p
- 2x 3G/HD-SDI (w/loop)
- 1x HDMI
- PTZ Trace Memory
- PTZ Sync Motion
- PoE+
- IP control
- S700PTP support
- 100 Preset Memories
- 1/4, 1/16, 1/64 ND

Поворотные камеры



SRG-360SHE

- 1/2.8" HD CMOS
- 30x opt zoom
- 1080/50p/50i/25p
- 3G/HD-SDI, HDMI, IP
- Stereo Input
- Day/Night
- Wide-DR
- 256 preset memories
- IP control
- Web Menu
- Trace Memory
- PTZ sync motion
- PoE+



SRG-300SE

- 1/2.8" HD CMOS
- 30x opt zoom
- 1080/50p/50i/25p
- 3G/HD-SDI, IP
- Audio Input (mono)
- Day/Night
- Wide-DR
- 256 preset memories
- IP control
- Web Menu



RM-IP500

- Multi-camera controller
- Broadcast style
- Direct access to main functions
- Dual Zoom control mechanism
- Trace memory control
- IP and RS-422 interface
- Tally indication
- Easy preset memories management
- Auto IP configuration
- Up to 100 cameras to be controlled by RM-IP500

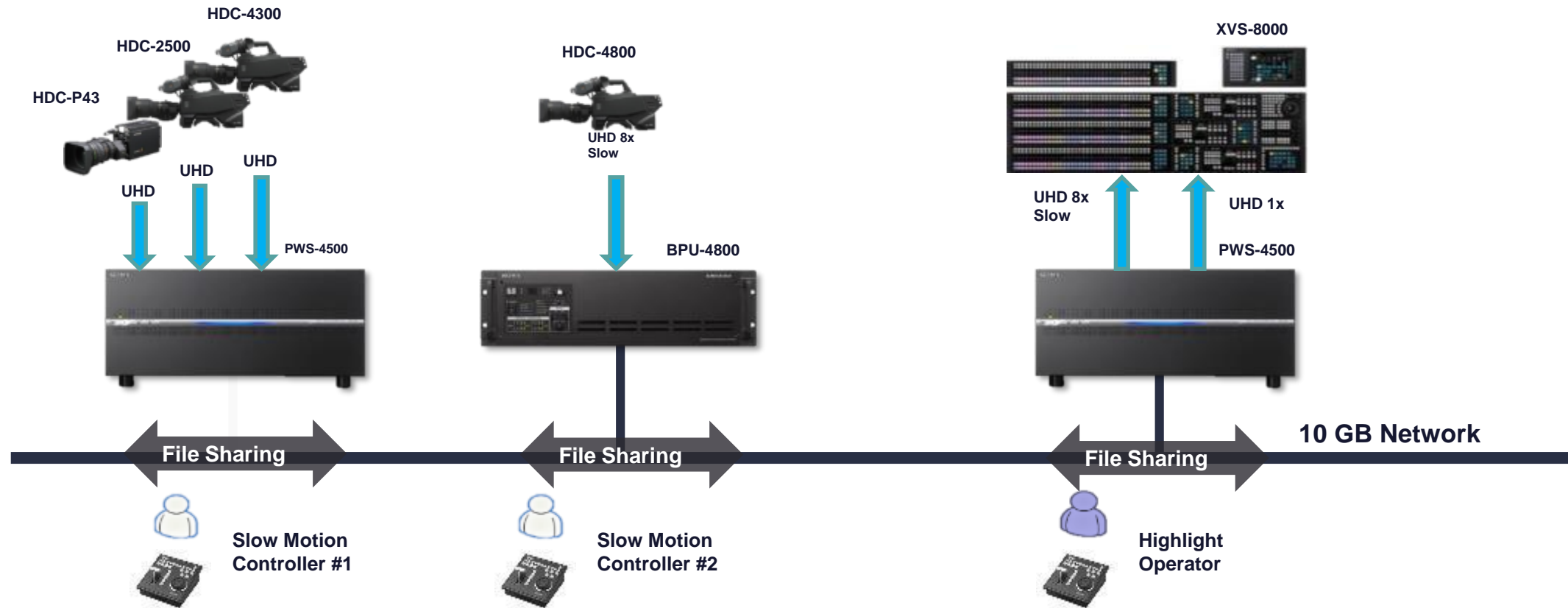


RM-IP10

- Budget controller
- Up to 112 cameras via IP
- Precise PTZ control
- IP, RS-422 and RS-232 I/F
- Tally indication
- Easy preset memories management
- Direct access to basic functions

Серверы повторов и записи

«Shareplay» и особенности системы



- Share files across a 10G network with no need to copy
- Highlight operator can instantly access material on any connected server
- Easily integrate UHD HFR content from HDC-4800 with UHD standard motion content
- Standard feature of all PWS-4500 and HDC-4800/BPU-4800 systems

IP Live Production

Открытые стандарты

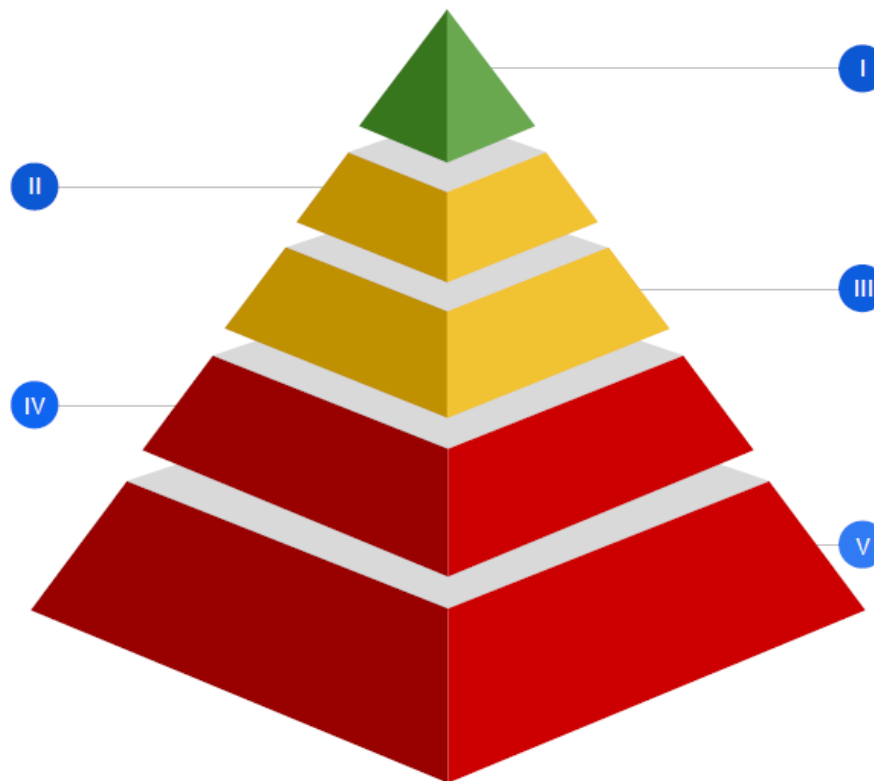
The Technology Pyramid For Media Nodes

Time and Sync

- PTPv2 configurable within SMPTE and AES profiles
- Multi-interface PTP redundancy
- Synchronisation of audio, video and data essences

Configuration and Monitoring

- IP assignment: DHCP
- Open configuration management - e.g., API, config file, SSH CLI, etc.
- Open monitoring protocol - e.g., syslog, agent, SNMPv3, etc.



Media Transport

- Single link video SMPTE ST 2110-20
- Software-friendly SMPTE ST 2110-21 Wide video receivers
- Universal, multichannel and low latency audio SMPTE ST 2110-30 Level C
- Stream protection with SMPTE ST 2022-7

Discovery and Connection

- Discovery and Registration: AMWA IS-04
- Connection Management: AMWA IS-05
- Audio mapping: AMWA IS-08 (in dev.)
- Topology discovery: LLDP

Security

- EBU R 148 Security Tests
- EBU R 143 Security Safeguards
- Secure HTTPS API calls

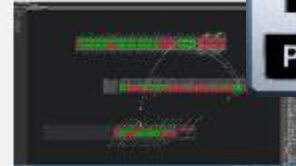
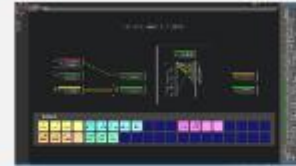
Sony is committed to open standards and endorses EBU tech3371

IP Live Production System

Production Orchestration



Live Element Orchestrator



Broadcast & Network Control



IP Network

ARISTA

CISCO

everlz

HUAWEI

JUNIPER

Acquisition



4K/HD System Camera



Audio over IP

Production



4K/HD Production Switcher



4K/HD Production Server

Processing



SDI-IP Conversion & Processing



Transceivers

3rd Vendors

Time & Sync

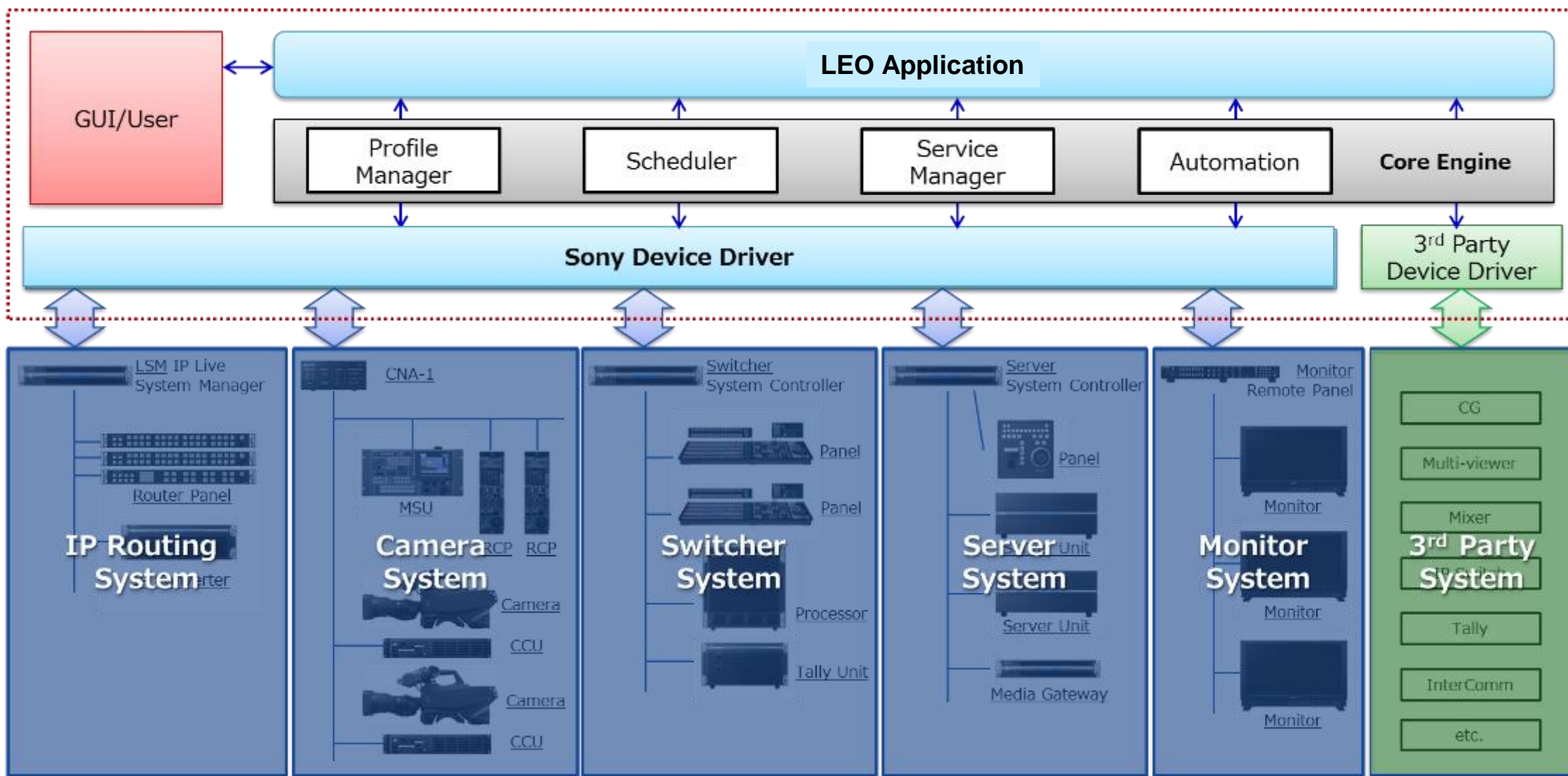
Multiview

Audio Mixer

Intercoms

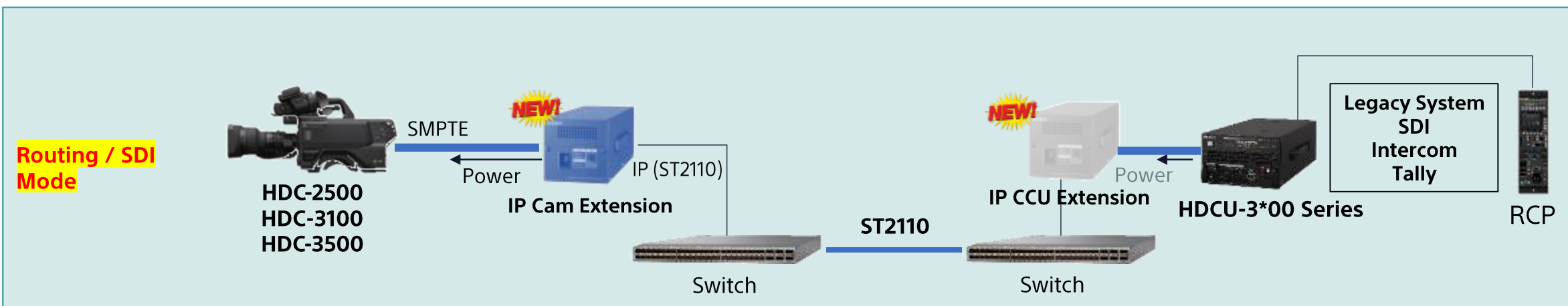
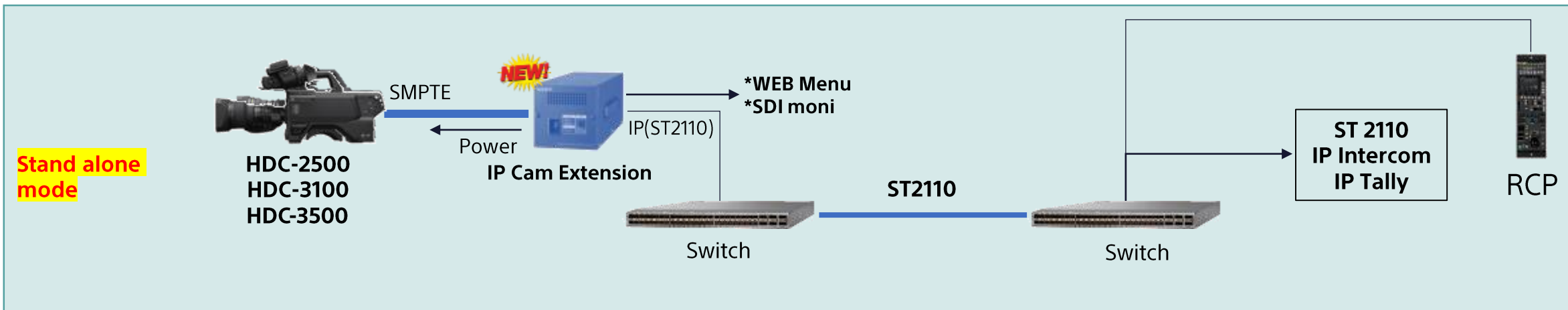
Contribution & Distribution

Live Element Orchestrator



IP Live Production

IP Extension Adapters - Workflows



Видеомикшеры

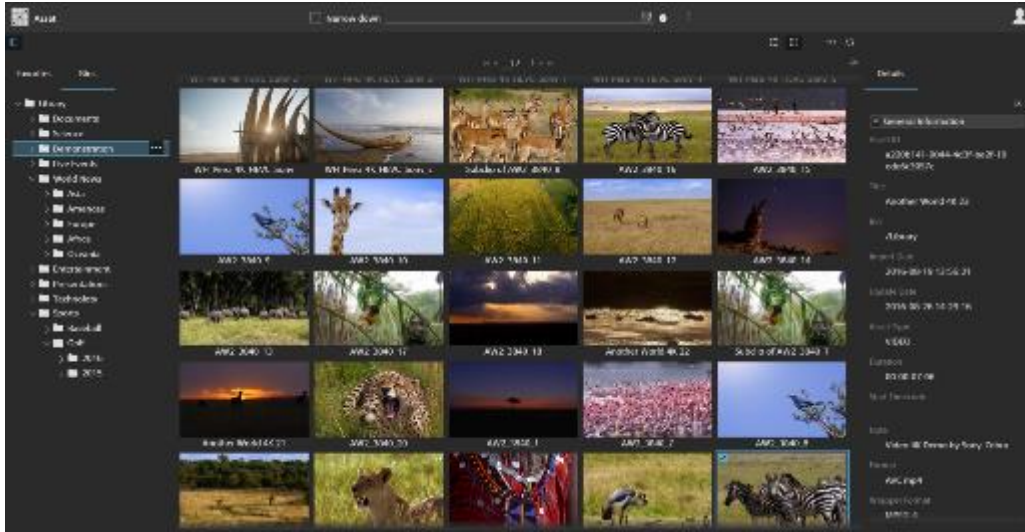
Поколение микшеров XVS

- XVS-6000, XVS-7000, XVS-8000 & XVS-9000
- Configurable in HD from 16 I/P, 24 O/P with 2ME up to 160 I/P, 48 O/P with 10ME
- In UHD Up to 80 I/P and 40 O/P with 5 ME busses
- Full multi ME 4K operation as easy as HD
- Choice of interfacing SDI, 12G or IP based
- Full remote production capability
- Much improved frame memory system



Media Backbone NavigatorX

Media Backbone NavigatorX



Content and workflow management software solution for production integration and fast deployment, flexibility and scalability.

Building on an **open source platform** and leveraging web technologies to keep costs low and deliver the advantages of web-based access and user platform independence.

You can **orchestrate and automate your workflows**, with ease, and **streamline content management** and achieve next-generation asset management with real-world affordability.

Get more from your assets, **improve efficiencies** and avoid missed deadlines.



3rd Party Integrations

Transcode, QC, Archive, NLE, Delivery



Adobe Premiere Pro CC



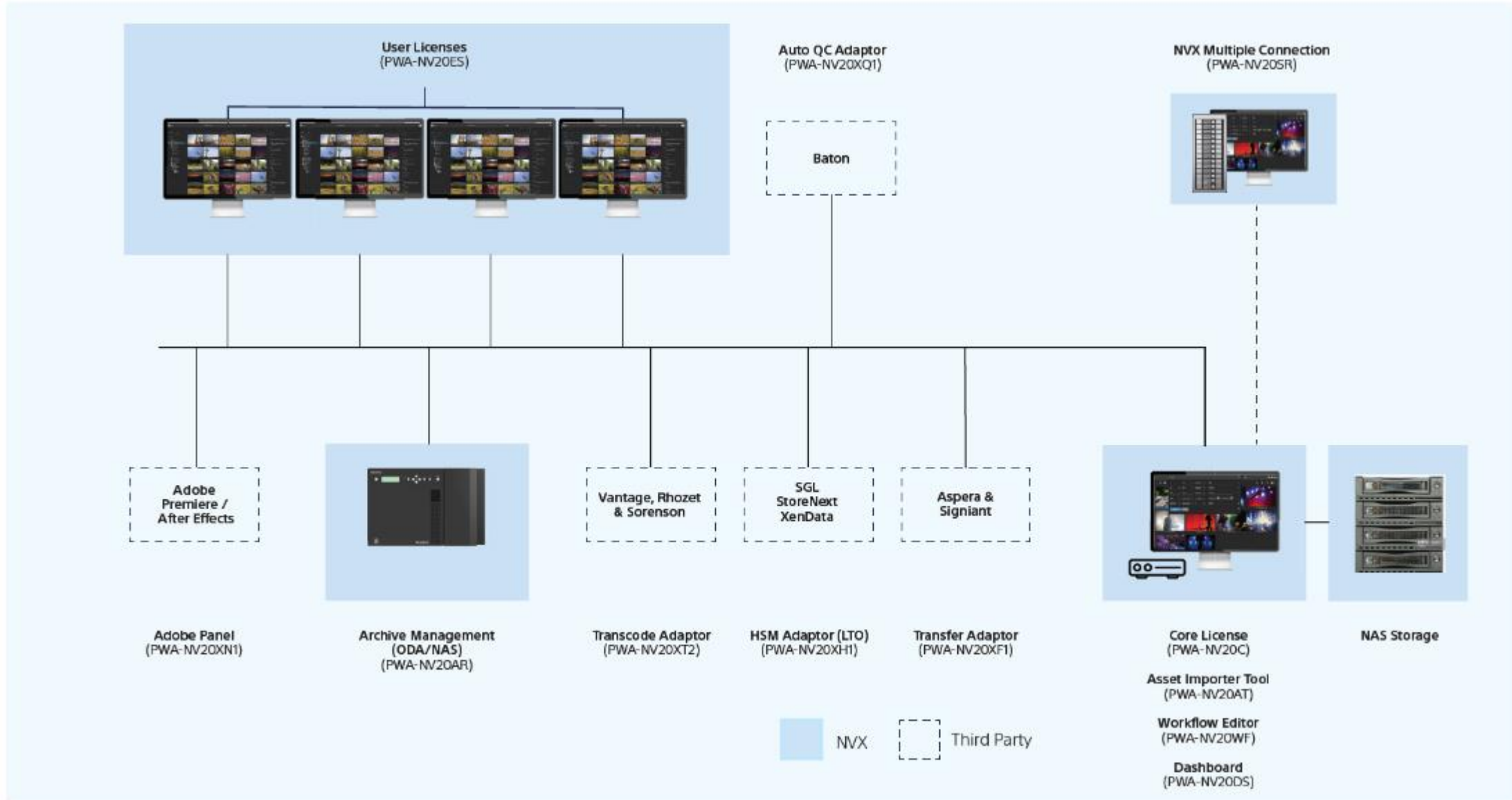
Adobe After Effects CC



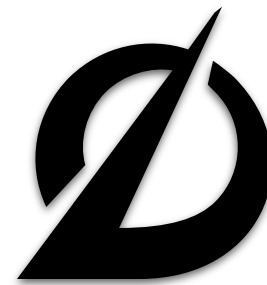
CATALYST



NavigatorX – Структура



Optical Disc Archive Generation2



ODA Generation 2 Product Line-up



Stand Alone Drive – ODS-D280U

- Simple USB3 Connection to any computer
- Includes Content Manager for easy archive of rich media
- Many 3rd Party Archive utilities support ODA Gen2
- Reliable and robust large capacity 3.3TB WORM media
- High Transfer Rates – 1Gbps Write / 2Gbps Read
- Media mounts just like any other HDD
- Fast Random Access to media



ODS-L30M Expandable Library Solution

- 30 Slot Master Library Unit – up to 99TB capacity
- Uses same 3.3TB media as the desktop drive
- Expandable to 1.7PB capacity (max)
- Mix and Match up to 5 drive or cartridge expansion units
- Up to 18 drives can be added for maximum performance
- Wide range of 3rd party software supports ODA

Профессиональный звук

Серия UWP-D

NEW

UWP-D21
UWP-D22
UWP-D26



- UWP-D wireless microphone packages
- Single channel receiver
- Digital Audio Interface for High Quality Sound for ENG / EFP productions
- Available with belt pack transmitter, handheld microphone transmitter & XLR plug-on transmitter

URX-S03D



- Portable Two-Channel Wireless Receiver
- Digital Audio Processing for High Quality Sound



URX-P03D

- Portable Dual-Channel Wireless Receiver
- MI shoe connection with SMAD-P3D
- 3rd mic input
- Headphone monitoring
- High Quality Sound for ENG / EFP Productions

Серия DWX - приемники



NEW DWR-S03D

- 2-channel portable slot-in receiver
- Up to 148 MHz bandwidth (Depending on region)
- Compatible with all DWX Series
- 1.2msec latency with a 96KHz sampling rate.
- Transmits/receives high-quality (24-bit/48-kHz digital)
- Quad Codec:
 - MODE1 Compatible with first gen DWX series devices.
 - MODE2 Short delay times with high audio quality.
 - MODE3 Uses signal processing to suppress noises caused by unexpected pulse interference.
 - MODE4 Best audio quality



DWR-R02DN

- 2-channel 19" rack-mountable (1U-size) receiver
- Wide bandwidth from 470mHz-710mHz
- Transmits/receives high-quality (24-bit/48-kHz digital)
- Triple Codec:
 - MODE1 high quality sound
 - MODE2 higher quality sound (96kHz sampling rate) & very low audio latency (1.5msec)
 - MODE3 more reliable RF transmission
- Full control of the receivers and transmitters from Wireless Studio software



DWR-R03D ***NEW CODEC***

- 2-Channel 19" rack-mountable (1U-size) receiver
- Very high audio quality with 20Hz-22kHz frequency response and dynamic range over 106dB
- New Mode 4 Sony High Definition Sound
- High density multi-channel operation
- Low audio latency to 1.2msec to analogue output
- HDR RF input
- Supports Dante audio-over-IP

Серия DWX - передатчики

DWM-02N



- Reliable RF transmission and low audio latency with higher sampling rate
- Compatible with DWX Series
- Interchangeable head for capsule choice

DWT-P01N



- 3 Codec Modes
- Low Audio Latency & High Quality Sound
- Reliable RF Transmissions – expands operation range
- 3 CH versions cover 470MHz – 694MHz
- +48v Phantom Power

NEW
DWT-B30
Gen3



- OLED Display
- Up to 6.5 hours running time
- Remote control via Cross Remote
- 4 Codec Modes
- Up to 148 MHz bandwidth
- Reliable RF Transmissions – expands operation range
- Compatible with all DWX series

DWT-B03R
Gen3



- 4 Codec Modes (New with F/W v3.0)
- Wide bandwidth (up to 148MHz)
- Tough, light moisture resistant magnesium body, just 99g (approx.)
- Compact size 53x60x17mm (approx. excluding antenna)
- Long running time with NP-BX1 battery (up to 7 hours)
- Easy operation and full RF control
- Rechargeable with BC-DWX1 charging unit

Профессиональные мониторы

Профессиональные мониторы Sony

REFERENCE

Reference OLED



FIDELITY

Premium OLED



Premium LCD



UTILITY

Basic LCD



LMD-A240/220/170 V3 ***NEW***

- Concept
 - >> Cost effective HD-HDR monitoring solution.
- Features
 - >> High Dynamic Range (HDR) support with multiple EOTF – ITU-R BT.2100(HLG), SMPTE ST2084, Slog2, Slog3 and Slog3(Live HDR)
 - >> Colour matching with BVM-HX310 and BVM-X300.
- Benefits
 - >> Expanding the choices of monitors for SR Live and Instant HDR systems
 - >> Firmware available on Sony web site. Applicable to ALL LMD-A series
 - >> Free of charge.
- Available now!



LMD-A170
350 cd/m2

LMD-A220
230 cd/m2

LMD-A240
350 cd/m2

The new V3 Firmware provides to existing or new users of Sony LMD-A professional monitors, a cost effective HDR monitoring solutions for various indoors and outdoors applications such as OnSet, Live and studio.

SONY